

New Mobile Federal Courthouse and John Campbell Courthouse Renovation

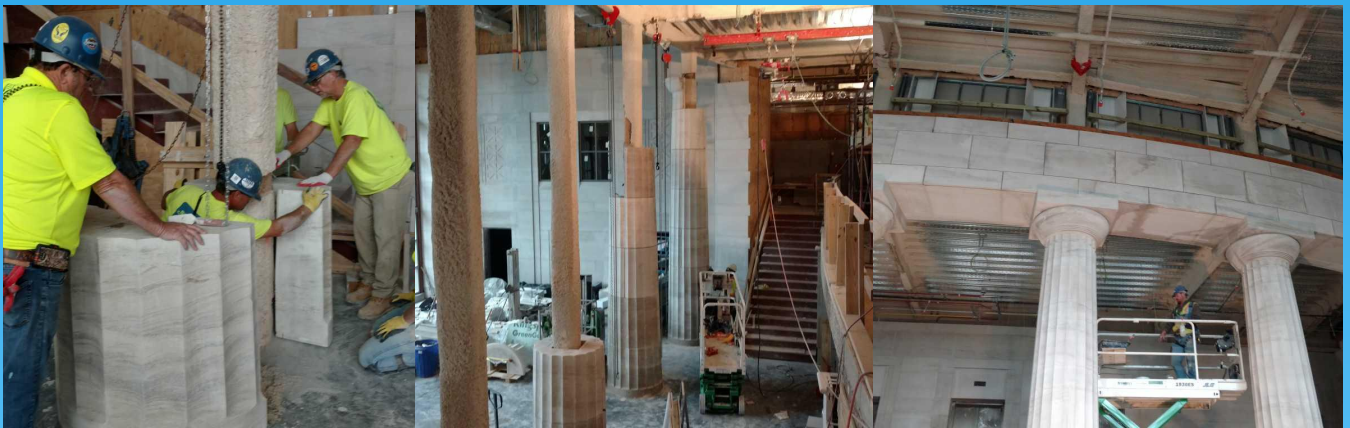
Town Hall Bulletin



Issue No. 24

January 2018

CONSTRUCTING COURTHOUSE COLUMNS



Setting the first column piece

Columns underway

Completed columns

NOTHING says “courthouse” quite like fluted columns. Over the past two months both the interior lobby columns and exterior main entrance columns were set in place. Each individual Alabama limestone fluted column piece stands about 3 feet tall and weighs roughly 3,000 pounds. A single column is comprised of a 12 half-round stone pieces. The 4 lobby columns stand 21 feet tall and the 6 columns outside the main entrance are 24 feet tall. The pieces were stacked by hand around the structural tube steel columns and serve as perhaps the most significant aesthetic element on the courthouse.

PUNCHLIST UNDERWAY: In January the design team inspected and created their punchlist of the first and second floors of the building. The punchlist is a list of corrections that are needed to be done on the installed work before it can be accepted. On this project the design-build team executes their punchlist first and then the government and CM perform their punchlist. The government punchlist of the first and second floors is scheduled for January 31, 2018.

CAMPBELL DESIGN UPDATE: The design team has been working over the past two months on the creation of the 90% construction documents. In this stage most of the details will be flushed out and is the second to last design stage. The 90% submission is scheduled to be delivered on February 8, 2018.

Contacts:

General Contractor
Construction Manager

Yates Construction George Yates
APSI CM Jack Solari

Phone: 228-348-0608
Phone: 214-683-7987

gvates@wg Yates.com
jack.solari@apsicm.com