

New Mobile Federal Courthouse and John Campbell Courthouse Renovation

Town Hall Bulletin



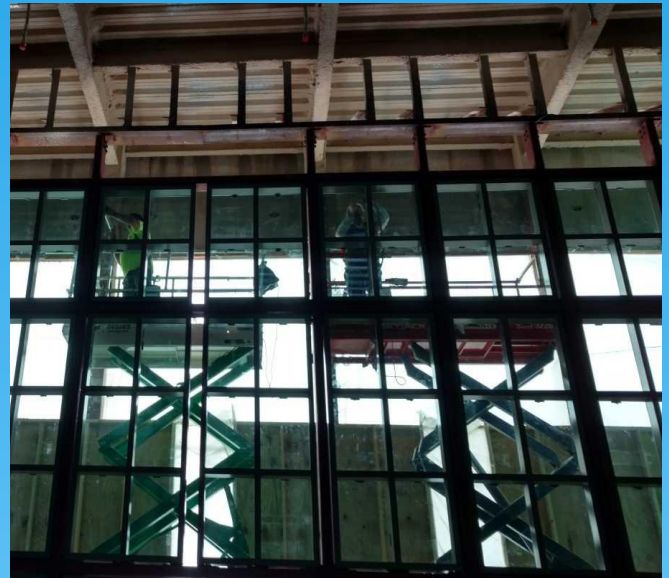
Issue No. 20

August 2017

PANELS OF VISION AND JUSTICE



Carved limestone spandrel panel



Glass curtainwall entry

Two different kinds of panels showed up on site this month. The image on the left is of a carved limestone medallion to be placed on the exterior of the building. On the right workers are installing glass panels in the main entry curtainwall system. The complete system has a total of 136 glass squares.

FLOORING IT: This month work began on some of the hard flooring surfaces. In the USMS areas the terrazzo flooring was poured and polished while in the restrooms floor and wall tiles were thin-set and grouted into place. Both of these activities will continue into the next month.

CAMPBELL COURTHOUSE POWER: Through the design process it was discovered that the electrical power currently feeding Campbell has some limitations. While the power feed is sufficient today, it will be inadequate for the future tenants and building loads. In August, the team worked together to: identify the issues, gather current building data, develop solutions, vet the solutions with Government engineers and independent consultants, and then authorize the design team to proceed with a solution.

Contacts:

General Contractor
Construction Manager

Yates Construction George Yates
APSI CM Jack Solari

Phone: 228-348-0608
Phone: 214-683-7987

gyates@wg Yates.com
jack.solari@apsicm.com